

MCLB ALBANY SAFETYGRAM

Personal Protective Equipment

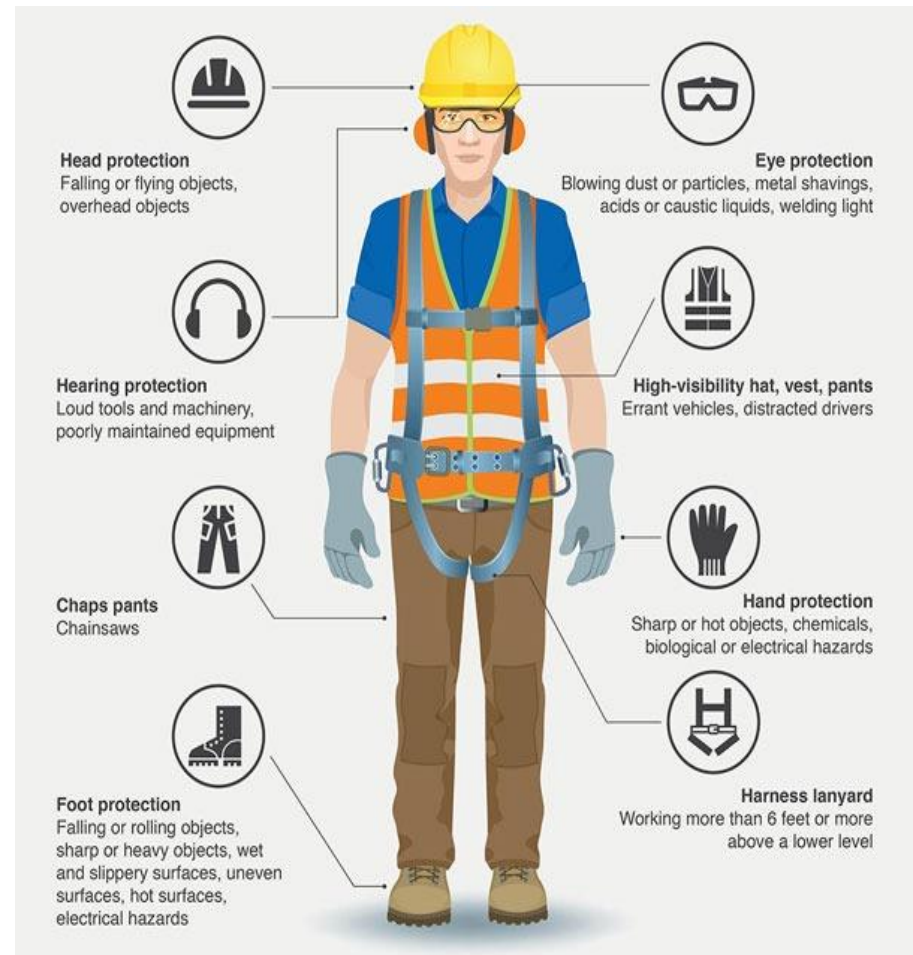
What is personal protective equipment?

Personal protective equipment, commonly referred to as "PPE", is equipment worn to minimize exposure to hazards that cause serious workplace injuries and illnesses.

Personal protective equipment may include items such as gloves, safety glasses and shoes, earplugs or muffs, hard hats, respirators, or coveralls, vests, and full body suits.

Employers are required to train each worker required to use personal protective equipment to know:

- When it is necessary
- What kind is necessary
- How to properly put it on, adjust, wear, and take it off
- The limitations of the equipment
- Proper care, maintenance, useful life, and disposal of the equipment



For more information please visit or scan the QR code:
<https://www.osha.gov/personal-protective-equipment>



Risk Management 639-5249
Prepared by: Whitney Hendrix

March 2024

